

# Teamcenter 11.2 Systems Engineering and Requirements Management

## Systems Architect/ Requirements Management Release Bulletin



# Manual History

<b>Manual Revision</b>	<b>Teamcenter Requirements Version</b>	<b>Publication Date</b>
A	3.0.1	May 2003
B	4.0	December 2003
C	4.1	February 2004
D	5.0	July 2004
E	5.1	October 2004
F	6.0	March 2005

<b>Manual Revision</b>	<b>Teamcenter Systems Engineering and Requirements Management Version</b>	<b>Publication Date</b>
G	2005	September 2005
H	2005 (SR1)	July 2006
I	2007	December 2006
J	2007.1	April 2007
K	2007.2	September 2007
L	2007.3	January 2008
L1	2007.3.1	April 2008
L2	2007.3.2	July 2008
M	8	January 2009
N	8.0.1	June 2009
O	8.1	October 2009
P	8.2	November 2010
Q	9	July 2011

<b>Manual Revision</b>	<b>Teamcenter Systems Engineering and Requirements Management Version</b>	<b>Publication Date</b>
R	9.1	May 2012
R1	9.1.5	April 2014
S	10.0	January 2015
T	10.0.1	January 2016
U	10.0.2	March 2016
V	10.1	September 2016
W	10.1.1.1	February 2017
X	11.1	March 2018
Y	11.2	September 2019

This edition obsoletes all previous editions.

# Release Bulletin Contents

<b>Manual History .....</b>	<b>3</b>
<b>Contents .....</b>	<b>5</b>
<b>Preface.....</b>	<b>7</b>
<b>Chapter 1: Introduction .....</b>	<b>9</b>
Introduction.....	9
Release Support .....	9
Compatible Third-Party Software Versions.....	9
Global Technical Access Center (GTAC) .....	11
<b>Chapter 2: New Features.....</b>	<b>12</b>
New Features .....	12
What's New for Users .....	12
What's New for Project Administrators .....	12
What's New for System Administrators .....	13
<b>Chapter 3: Release Notes.....</b>	<b>16</b>
Release Notes.....	16
Install compatible Java.....	16
Architect/Requirements client supported only with 32-bit Java 8.....	16
Java Security Warning in the Architect/Requirements Client .....	16
Java content can be disabled in the browser .....	16
Firefox pop-up dialog upon initial client launch.....	18
Browser messages on client launch attempt when client is not installed.....	19
Constraints for Supporting Microsoft Office Integration .....	22
Windows Client Hardware.....	24
Primary Interop Assemblies Redistributable Required.....	25
Excel Live File Format Change .....	25
Stencil and Diagram Formats Added with Visio Not Supported.....	25
Additional data for migration to the Unified Architecture. ....	25
Known Issues .....	26
Document Front Matter is Imported as Requirements (PR 6427144) .....	26
Use of multiple multilevel lists during export causes formatting loss (PR 1878351).....	26
Internet Explorer 11 may fail to launch the client .....	26

<b>Chapter 4: Closed Problem Reports .....</b>	<b>29</b>
Closed Problem Reports.....	29
Closed Problem Reports for Architect/Requirements 11.2.....	29
<b>Chapter 5: Certifications.....</b>	<b>31</b>
Certifications.....	31
Support Removed as of Architect/Requirements 11.2.....	31
<b>Index.....</b>	<b>32</b>

# *Preface*

---

This manual describes features introduced with Teamcenter Systems Architect/Requirements Management 11.2. It also contains general notes, descriptions of known defects, a list of the Architect/Requirements documentation set, and a list of closed test issues.

Architect/Requirements belongs to the Siemens PLM Software portfolio of digital product lifecycle management software and services.

---





# Chapter 1: Introduction

## Introduction

---

This chapter briefly describes Systems Architect/Requirements Management support policies for releases and operating systems. It also describes the Global Technical Access Center (GTAC).

---

### Release Support

Siemens PLM Software encourages customers to stay reasonably current with new releases of Systems Architect/Requirements Management products. This upgrade strategy ensures that users obtain the most current announcements and information about new features in a timely manner. It also allows Siemens PLM Software's support of its products to be consistent with that of our dependent technology partners (that is, operating systems, databases, and embedded software products).

### Compatible Third-Party Software Versions

The *Systems Architect/Requirements Management Server Installation Manual for Windows*, the *Systems Architect/Requirements Management System Administrator's Manual*, and the *Systems Architect/Requirements Management User's Manual* document the minimum version of operating systems, compilers, databases, client browsers, and other third-party software with which Systems Architect/Requirements Management 11.1 is compatible. Because Systems Architect/Requirements Management releases are asynchronous with the release of compatible third-party software, it is possible for Systems Architect/Requirements Management customers to acquire and install a newer version of third-party software before Siemens PLM Software has the opportunity to certify it.

Siemens PLM Software's standard policy with respect to new versions of operating systems, compilers, databases, client browsers, and other third-party software relies on the manufacturers' guarantees. If the manufacturer guarantees that the new version of its product is binary-compatible with the preceding version, Siemens PLM Software expects our products to function properly when running on the new version. Our experience shows that virtually no problems are encountered when executing Systems Architect/Requirements Management with a third-party version later than the version on which we completed our certification testing.

Siemens PLM Software will make a reasonable effort to support Systems Architect/Requirements Management running on a later version and to work with you to resolve any difficulty that may arise but will not, in most cases, complete the testing required to state Systems Architect/Requirements Management software is certified.

Systems Architect/Requirements Management compatibility with operating systems and compilers involves these two considerations:

- Compatibility for runtime.

- Compatibility for relinking customizations and paths.

Typically, operating system manufacturers assure runtime binary compatibility between the successive versions of their operating systems. We make a reasonable effort to support Systems Architect/Requirements Management running on a later version of an operating system. To a lesser degree, operating system manufacturers provide similar assurances when relinking or rebuilding executables and libraries with new versions of the compilers. In cases where compatibility does not exist between old and new compiler versions, all customization incorporated into the Systems Architect/Requirements Management base product must be linked using the version of the compiler with which Systems Architect/Requirements Management has been released. This also applies to the installation of Systems Architect/Requirements Management patches.

To summarize, Systems Architect/Requirements Management may run on a newer version of an operating system, but customizations and patches may need to be compiled and linked on an earlier version.

For information about the lowest version of software with which Systems Architect/Requirements Management 11.1 runs, see the *Systems Architect/Requirements Management Server Installation Manual for Windows*, the *Systems Architect/Requirements Management System Administrator's Manual*, and the *Systems Architect/Requirements Management User's Manual*. Although Systems Architect/Requirements Management might run using a lower level of software, keep in mind that we strongly discourage running at lower levels and that we will not provide support to anyone doing so.



If Siemens PLM Software discovers incompatible versions of third-party software, we will post bulletins in the **Solution Center** section of GTAC. This information is also available from your Systems Architect/Requirements Management provider.

## Global Technical Access Center (GTAC)

The Global Technical Access Center (GTAC) is your focal point for post installation software support. The center provides both your application and operating systems software support through telephone and electronic access.

Only through the use of this service can your call be logged, tracked and followed until resolved. In some instances, the solution to your problem or answer to your question may already exist and can be readily provided.

GTAC is organized into specialized teams which support specific product disciplines. These teams are located in close proximity to their parallel product development groups, so they can quickly locate the path that will lead you to improved productivity.

For more information, see the GTAC Support Services Guide available under **Featured Services** at the following location:

[http://www.plm.automation.siemens.com/en\\_us/support/gtac/](http://www.plm.automation.siemens.com/en_us/support/gtac/)

# Chapter 2: New Features

## New Features

---

This chapter briefly describes new Architect/Requirements 11.2 features.

---

### What's New for Users

#### Support for Windows 10

Architect/Requirements 11.2 provides support for following versions of Windows 10:

- 32-bit version 1709 or higher
- 64-bit version 1709 or higher

#### Browser Support without Java Deployment Technologies

The following browsers are supported:

- Microsoft Edge 41 or higher
- Mozilla Firefox 67 or higher
- Internet Explorer 11

#### Support for .NET 4.7 or 4.8

Architect/Requirements 11.2 provides support for .NET4.7 or 4.8 on:

- 32-bit Windows 10
- 64-bit Windows 10

### What's New for Project Administrators

*No changes for this release*

## What's New for System Administrators

### Web Application Server (WAS) Certifications

Architect/Requirements 11.1 supports the following WAS platforms:

<b>WAS</b>	<b>Server JRE</b>
Tomcat 9.0.22	Oracle 64-bit JRE 8u201
Weblogic 12cR2 (12.2.1)	Oracle 64-bit JRE 8u201
WebSphere 9.0.0.11	IBM SDK, Java Technology Edition, Version 8.0.5.30

### Action Versant Object Database Added

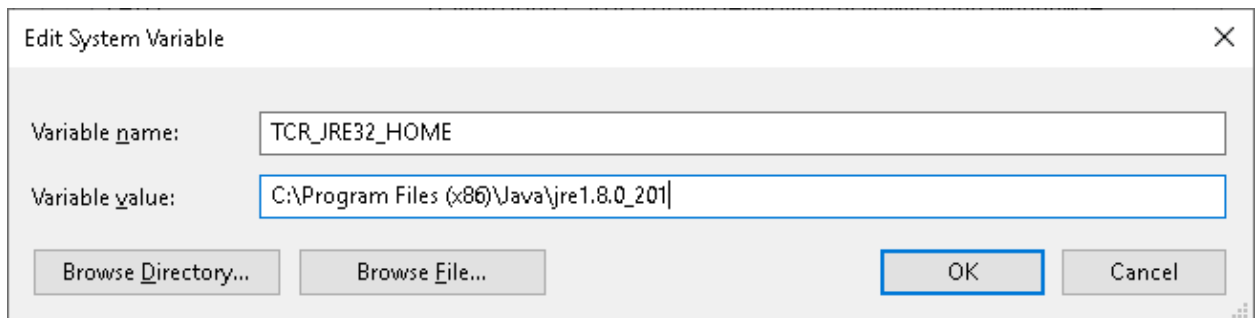
- V.O.D 9.3.0.24 on Windows servers.

## Architect/Requirements client supported with “free standing” 32-bit Java 8 JRE

In addition to Java installed to the desktop via the Oracle installer, the client launch is supported with a free standing 32-bit Java 8 JRE. A free standing JRE is one that is copied (or unzipped) to a folder, instead of being placed onto the file system using the Oracle installer. This configuration is generally considered better for security. It also reduces the likelihood of conflicts with other applications on a Windows client system.

Regardless of the deployment technique, the TcSE client configuration requires that the **TCR\_JRE32\_HOME** environment variable is defined in the Windows system environment with its value set to the root folder of the Java deployment.

1. Set the **TCR\_JRE32\_HOME** environment variable in the Windows system environment table via the Control Panel. For example, if you deploy 32-bit Java 8 to the folder *D:\apps\Java\jre1.8.0\_201*, you would enter it as follows:



2. Restart the Windows system. This step is essential in order to ensure that **TCR\_JRE32\_HOME** is visible to the TcSE client launcher at runtime.

## Over-the-web client installation feature is removed

Architect/Requirements 11.1, and previous versions, featured over-the-web installation. That feature has been removed, since it was based on Java deployment technologies (applets and java web start), which will no longer be included in future versions of Java. In its place, command line installation must be used instead. Command line installation, also a longtime feature, continues to provide an option for silent installation.

## Command line client installation and Live Office diagnostics


Architect/Requirements 11.2 provides for installation of the client via the command line only. It no longer includes over-the-web installation, which utilized java deployment technologies. For that reason, the administrative user is no longer prompted to launch the installer when logging in for the first time.

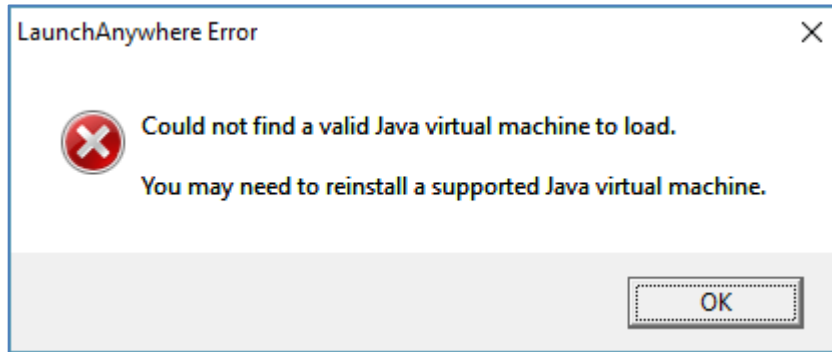
As an improvement for command line installation, installation of the Architect/Requirements application server installation now includes creation of a shared folder, **TcSE\_Client\_Installer**, containing client installation related files. If Java is installed to the desktop via the Oracle installer, the system administrator would launch the client installer from the shared folder using a command line similar to the following:

```
\\<TcSE-Windows-server>\TcSE_Client_Installer\setup.exe
```

Alternatively, if Java is installed as a free standing 32-bit Java 8 JRE, the system administrator would launch the client installer from the shared folder using a command line similar to the following:

```
\\<TcSE-Windows-server>\TcSE_Client_Installer\setup.exe LAX_VM
"%TCR_JRE32_HOME%\bin\java.exe"
```

 Omission of the the last two arguments can result in a message similar to the following:



Similarly, Live Office diagnostics no longer launches over-the-web prior to when the client has been installed. Using the shared folder, the system administrator would launch the Live Office diagnostics with a command line similar to the following:

```
\\<TcSE-Windows-server>\TcSE_Client_Installer\TcSEDiagnosticTool.exe
```

### Simplified uninstaller naming

The uninstallers for the client and server for Architect/Requirements 11.2 the standard, more intuitive name *uninstall.exe*. The functionalities, along with the locations, of the uninstallers remain unchanged.

### Web application configuration parameters removed

The following Web Application Configuration Parameters are no longer needed and have been removed from the user interface:

Parameter	Description	Rationale for removal
<b>JRE.Version</b>	List of Supported TcSE Client Side JRE Versions	The TcSE client's JRE is now specified by the TCR_JRE32_HOME environment variable.
<b>RegeditEnabled</b>	Set this parameter to true if users have access to edit the registry.	The TcSE client no longer uses the registry editor for accessing registry information.

# Chapter 3: Release Notes

## Release Notes

---

This chapter contains general release notes and briefly describes known issues for Architect/Requirements 11.2.

---

### Install compatible Java

Architect/Requirements 11.2 installation does not include a Java Runtime Environment (JRE) or a Java Development Kit (JDK). However, Java is required for installing Architect/Requirements server. The installation procedure fails without the JDK. For information on installing Java, see the Architect/Requirements Server Installation Manual for Windows for details.

### Architect/Requirements client supported only with 32-bit Java 8

As of Java 9, Oracle no longer provides a JRE in the 32-bit format. Since the Architect/Requirements 11.2 client requires a 32-bit JRE, it is only supported with Oracle's 32-bit Java 8 JRE.

### Java Security Warning in the Architect/Requirements Client

When you launch the Architect/Requirements client for the first time, a Java security warning is displayed. Select the check box **Do not show this again for apps from the publisher and location above** and click **Run**.

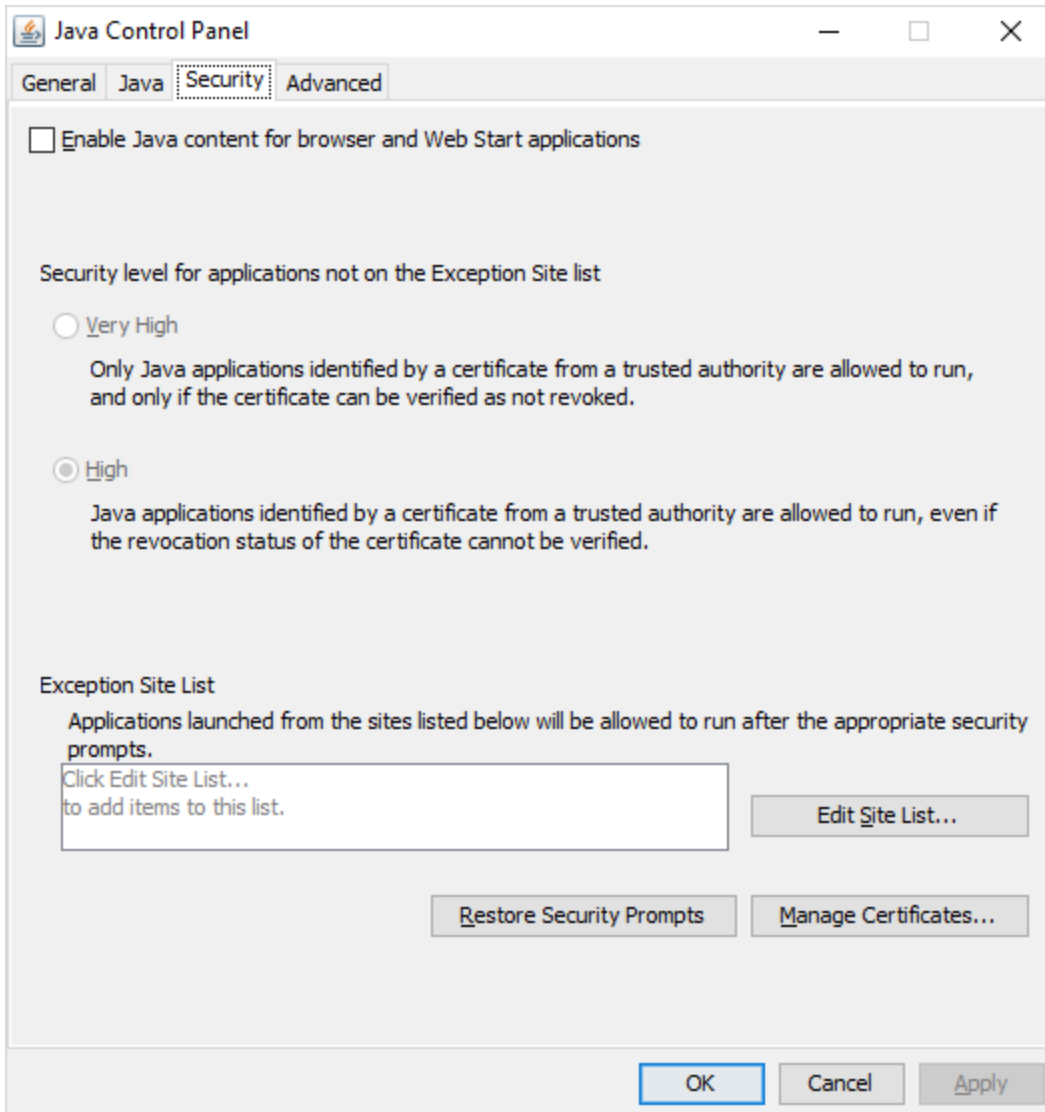


Note that the name of the application is **Teamcenter Systems Engineering**.

### Java content can be disabled in the browser

Architect/Requirements 11.2 no longer requires Java deployment technologies (Applets and/or Java Web Start). For this reason, if you install your 32-bit Java 8 JRE using the Oracle installer, the the Java Plug-in can be disabled on your client systems by unchecking the “Enable Java content for browser and Web Start applications”:

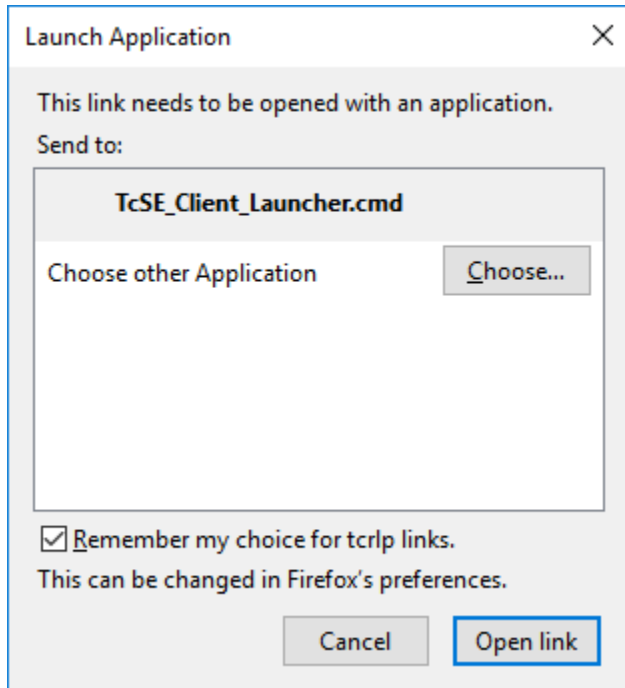




## Firefox pop-up dialog upon initial client launch

When launching the Architect/Requirements client for the first time, Firefox or Chrome will present the user with a pop-up to launch the TcSE client launch protocol script, *TcSE\_Client\_Launcher.cmd*.

- Firefox users should be instructed to check the option to **Remember my choice to launch trclp links**, and then click the **Open Link** button.



Similar dialogs are not presented to users of the Microsoft Edge or Internet Explorer 11 browsers, because they are suppressed by an action of the client installer.

## Browser messages on client launch attempt when client is not installed

In cases where no client is installed, previous versions of the Architect/Requirements client launcher would prompt the administrative user to install the client using over-the-web installation functionality. With that feature removed as of version 11.2, the user will instead be prompted with browser specific messages.

The remedy for these browser specific messages is for the system administrator to complete the installation of the Architect/Requirements client. As summarized in the following table, the client installer will configure the **tcr1p** and **tcr1ps** desktop launch protocols, which are triggered when the launcher is invoked by **http** or **https** respectively:

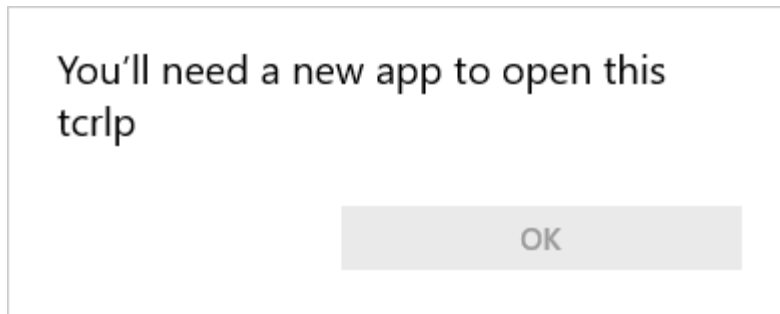
### Architect/Requirements Client Desktop Launch Protocol Associations

Web Protocol	Associated Desktop Launch Protocol
http	tcr1p
https	tcr1ps

If these protocol configurations are incomplete, the web browsers encounter an error from the desktop when the user clicks the launcher URL on the home page. When this occurs, the browsers will prompt the user with one or more message. Following is a summary of the messages presented from each supported browser:

#### Microsoft Edge

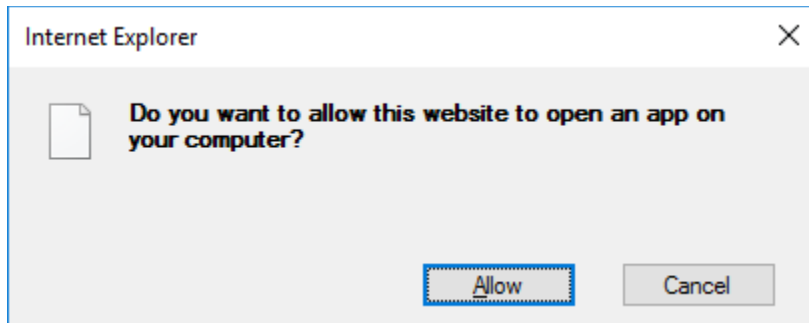
When a user attempts to launch the Architect/Requirements client prior to the client having been installed, the user may get the following message from a Microsoft Edge browser :



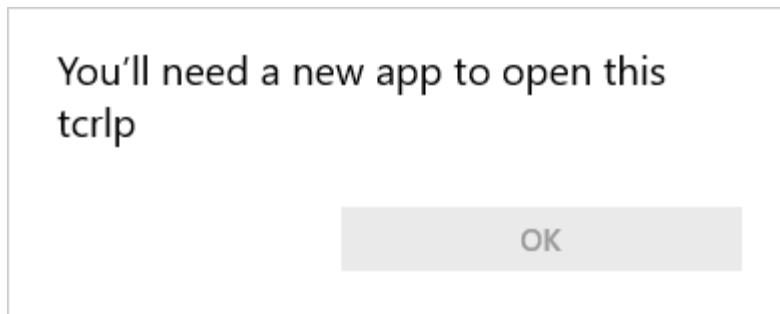
This dialog includes an OK button, however it is typically grayed out. To dismiss it, though, the user can hit the **Esc** (escape) key on their keyboard .

## Internet Explore 11

When a user attempts to launch the Architect/Requirements client prior to the client having been installed, the user may get the following message from an Internet Explorer 11 browser :



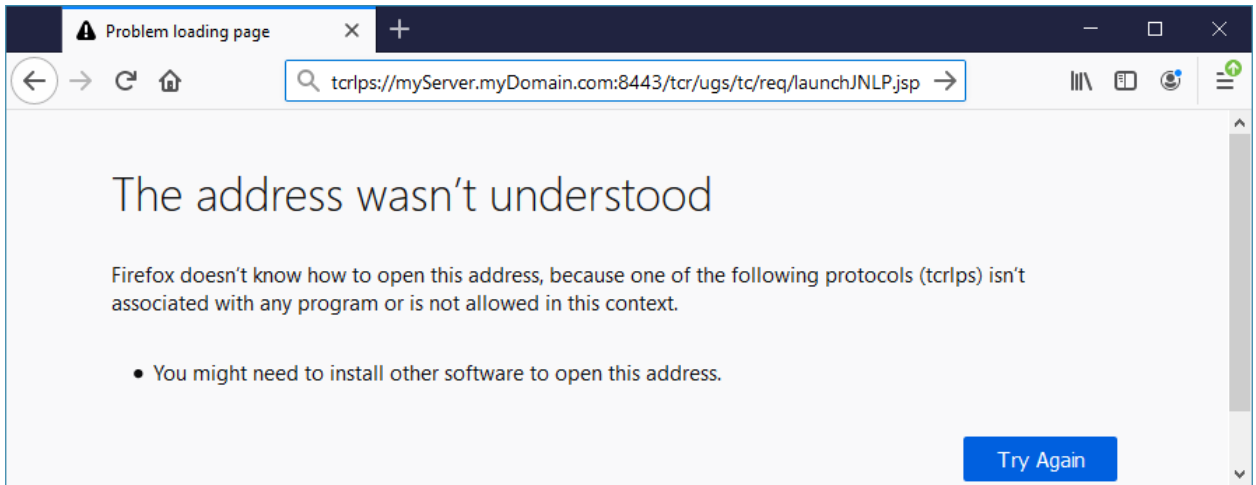
If the user clicks “Allow” in the dialog above, or if a client was previously installed, the user may also get a brief message regarding the “tcrp” protocol (or, for an SSL configured client, the “tcrps” protocol):



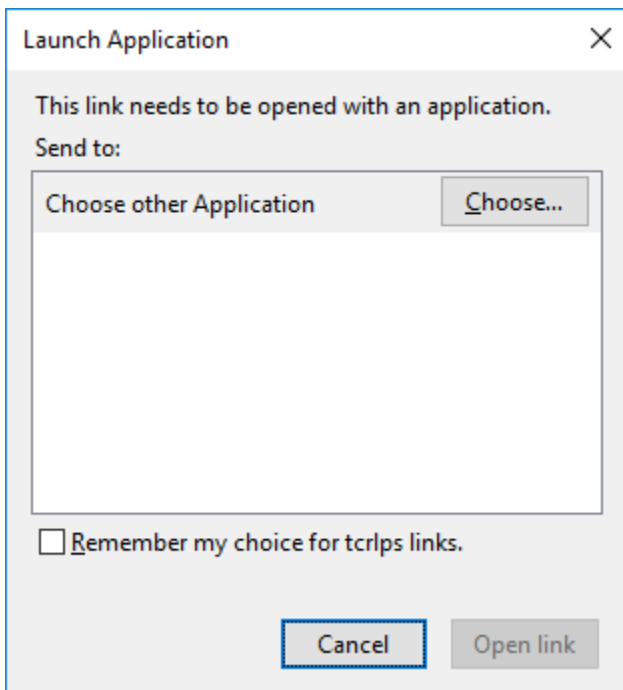
This dialog includes an OK button, however it is typically grayed out. To dismiss it, though, the user can hit the **Esc** (escape) key on their keyboard .

## Mozilla Firefox

When a user attempts to launch the Architect/Requirements client prior to the client having been installed, the user may get the following message from a Mozilla Firefox browser :



If the a client was previously installed, the browser will supply a brief message to the user regarding the “tcrp” protocol (or, for an SSL configured client, the “tcrtps” protocol):



## Constraints for Supporting Microsoft Office Integration

Architect/Requirements provides integration with versions 2013, 2016 and 2019 of the Microsoft Office Professional editions subject to the following constraints:

- **Supported Microsoft Office Packages**

<b>Product</b>	<b>Professional</b>	<b>Office 365</b>
Office	32-bit Office Professional Plus	32-bit Office 365 ProPlus
Visio	32-bit Visio Professional	32-bit Visio Pro for Office 365

- **Limitations of Support for Microsoft Office Packages**

<b>All Packages</b>	<b>Office 365 Packages</b>
Only versions 2013, 2016 and 2019 are supported.	Only the PC device is supported.
64-bit formats are not supported.	Offline installation is supported for all Office 365 packages included above.
Home and student editions are not supported	Over-the-web installation is supported for Office 365 ProPlus versions 2016 and 2019. But it is not supported for version 2013.

- **Limitations of Support for Microsoft Office features**

Microsoft Office and Visio include features that are added, removed, and changed between different versions. While Architect/Requirements integration functions are certified to work with the packages listed above, it is possible that it may not work with all combinations of Office and/or Visio features. Siemens PLM Software recommends that you verify business solutions on a test environment before using them in a production environment.

## Feature changes for Microsoft Office and Visio

Release	Office Professional Plus	Visio Professional
2013	* Changes in Office 2013 at <a href="https://technet.microsoft.com/en-us/library/cc178954(v=office.15).aspx">https://technet.microsoft.com/en-us/library/cc178954(v=office.15).aspx</a>	** What's New in Visio 2013 at <a href="https://support.office.com/en-us/article/What-s-new-in-Visio-11656535-2345-491d-bb9a-bef0141180f7">https://support.office.com/en-us/article/What-s-new-in-Visio-11656535-2345-491d-bb9a-bef0141180f7</a>
2016	* What's new and improved in Office 2016 at <a href="https://support.office.com/en-us/article/What-s-new-and-improved-in-Office-2016-29d7e38e-ef06-4d9c-a476-03d896928b2f">https://support.office.com/en-us/article/What-s-new-and-improved-in-Office-2016-29d7e38e-ef06-4d9c-a476-03d896928b2f</a>	** What's New in Visio 2016 at <a href="https://support.office.com/en-us/article/What-s-new-in-Visio-2016-798f4f39-2833-486b-9ae9-55162672102e">https://support.office.com/en-us/article/What-s-new-in-Visio-2016-798f4f39-2833-486b-9ae9-55162672102e</a>
2019	* What's new and improved in Office 2019 at <a href="https://support.office.com/en-us/article/what-s-new-in-office-2019-5077cbbe-0d94-44cc-b30e-654e37629b0c?ui=en-US&amp;rs=en-US&amp;ad=US">https://support.office.com/en-us/article/what-s-new-in-office-2019-5077cbbe-0d94-44cc-b30e-654e37629b0c?ui=en-US&amp;rs=en-US&amp;ad=US</a>	** What's New in Visio 2019 at <a href="https://support.office.com/en-us/article/What-s-new-in-Visio-2019-19b8e98d-9cf9-40ad-9277-eb65e3713a79">https://support.office.com/en-us/article/What-s-new-in-Visio-2019-19b8e98d-9cf9-40ad-9277-eb65e3713a79</a>

\* - Applies also to Office 365 ProPlus (Excel and Word)

\*\* - Applies also to Visio Pro for Office 365

## Windows Client Hardware

The minimum hardware requirements for running Office 2013, Office 2016, or Office 2019 on Windows 10 is described by Microsoft via the links in the table below. Before deploying Office on your Windows 10 systems, you should also consult your IT department to determine if the hardware is sufficient.

### System Requirements references for Microsoft Office and Visio

Release	Office Professional Plus	Visio Professional
2013	* <a href="https://technet.microsoft.com/en-us/library/ee624351(v=office.15).aspx">https://technet.microsoft.com/en-us/library/ee624351(v=office.15).aspx</a>	** <a href="https://products.office.com/en-us/visio/microsoft-visio-faq-diagram-software?legRedirect=true&amp;CorrelationId=d383e71d-bc7d-4ea1-af39-28bf8a2ecad3#">https://products.office.com/en-us/visio/microsoft-visio-faq-diagram-software?legRedirect=true&amp;CorrelationId=d383e71d-bc7d-4ea1-af39-28bf8a2ecad3#</a> , search for <b>system requirements for Visio</b> and click the link.
2016	* Open <a href="https://products.office.com/en-us/office-system-requirements">https://products.office.com/en-us/office-system-requirements</a> , search for <b>Office Professional Plus 2016</b> and click the link.	** Open <a href="https://products.office.com/en-us/office-system-requirements">https://products.office.com/en-us/office-system-requirements</a> , search for <b>Visio 2016</b> and click the link.
2019	* Open <a href="https://products.office.com/en-us/office-system-requirements">https://products.office.com/en-us/office-system-requirements</a> , search for <b>Office Professional Plus 2019</b> and click the link.	** Open <a href="https://products.office.com/en-us/office-system-requirements">https://products.office.com/en-us/office-system-requirements</a> , search for <b>Visio 2019</b> and click the link.

\* - Applies also to Office 365 ProPlus (Excel and Word)

\*\* - Applies also to Visio Pro for Office 365



## Primary Interop Assemblies Redistributable Required



This applies to Office 2013 only. It is not applicable to Office 2016 or Office 2019.

If .NET support is not included and Microsoft Office is installed before installing .NET, you must install a Primary Interop Assemblies Redistributable package from Microsoft. The **Microsoft Office 2010 Primary Interop Assemblies Redistributable** supports Office 2013. For more information on installing the Primary Interop Assemblies, see:

[http://msdn.microsoft.com/en-us/library/kh3965hw\(v=vs.100\).aspx](http://msdn.microsoft.com/en-us/library/kh3965hw(v=vs.100).aspx)

## Excel Live File Format Change

The format of Excel Live files was changed in Architect/Requirements 10.0. The change affected the storage of choice-property lists. An Excel Live file containing choice properties that was saved using a version older than Architect/Requirements 10.0, does not function properly when opened in Architect/Requirements 11.2. You must export these existing Live Excel files again in Architect/Requirements 11.2.

## Stencil and Diagram Formats Added with Visio Not Supported

Architect/Requirements supports integration with Visio Professional 2013, 2016, and 2019. However, the new formats for diagrams (**VSDX**) and stencils (**VSSX**) added with Visio 2013 are not supported.

- Offline copies of Visio diagrams integrated with Architect/Requirements must remain in **VSD** format. To avoid unnecessary rework, use Visio's **Save As** feature to save offline copies of Visio diagrams in the **VSD** format only. There is currently no plan to provide support for Visio's **VSDX** format with Architect/Requirements.
- The Architect/Requirements stencil import capability continues to support the **VSS** format. Stencils formatted in the new **VSSX** format into Architect/Requirements cannot be imported directly. To import a stencil formatted in the new **VSSX** format, you must first open it in Visio and save it as a **VSS** file.

## Additional data for migration to the Unified Architecture.

Systems Engineering data, including building blocks, connections, and ports, can now be migrated to the Unified Architecture application. For information on migrating to the Unified Architecture, contact Global Sales and Services.

## Known Issues

This section describes known issues identified in Architect/Requirements.

### Document Front Matter is Imported as Requirements (PR 6427144)

On importing a document that has a title page, Table of Content (TOC), pages with a tables, and document content with and without the **Shall** keyword, the title page, the TOC, and the page with the table are also imported as requirements in Architect/Requirements.

In documents that contain data formatted in a **Body Text** style, such as the **Normal** style, before the first heading, the first heading is converted into a requirement instead of a paragraph. The rest of the document imports correctly.

### Use of multiple multilevel lists during export causes formatting loss (PR 1878351)

The text content of requirements and notes is processed using Microsoft Word's single file web page (**mhtml**) format. When Microsoft Word **mhtml** file content is generated for edit or export, style references in requirements and notes need to be resolved. The document template used for the edit or export specifies a style sheet that has the style definitions. For numbered and bulleted list styles, it is not always possible to resolve the styles. This is due to the unusual way numbered and bulleted list styles are defined in Word **mhtml** format. Sufficient information to automatically correct the list styles is not present. To work around this issue, activator events have been defined to enable custom list style correction.



The related issues of numbered and bulleted list styles not appearing in Word edit sessions and Word exports from searches and reports has been fixed with PRs 6286955 and 6648739.

### Internet Explorer 11 may fail to launch the client

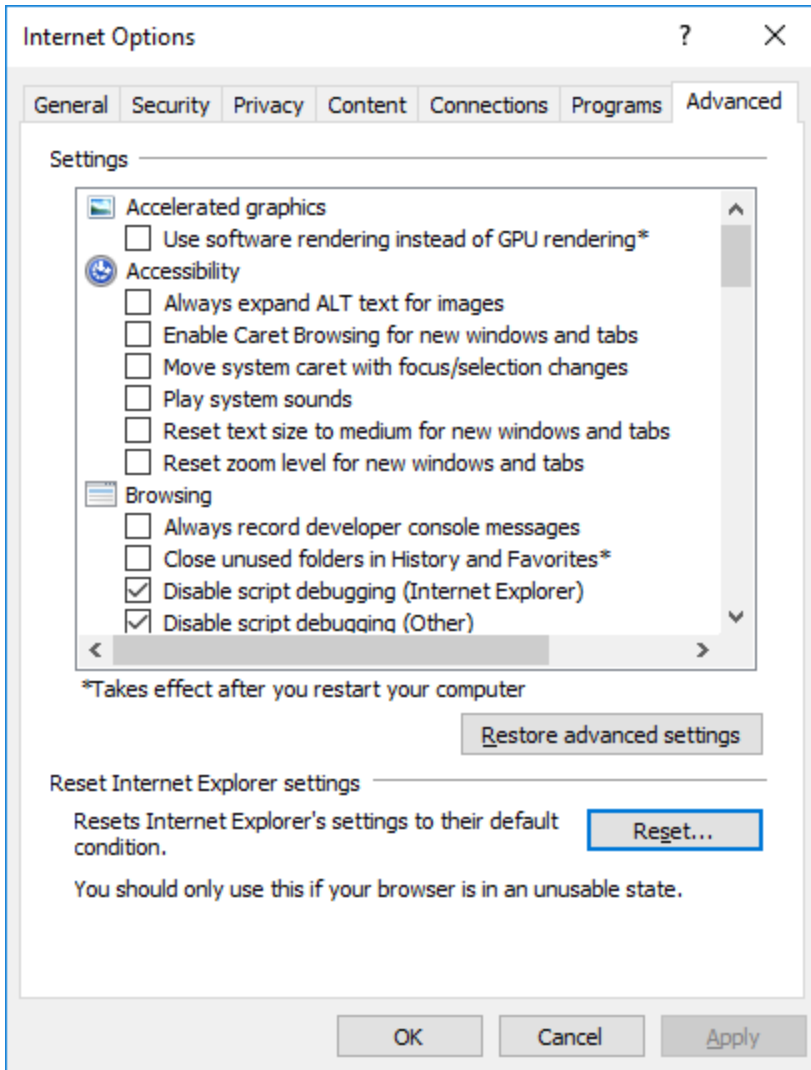
Ocasionally, the Internet Explorer 11 browser will not launch the Architect/Requirements client as expected even though it logs the user in successfully. The remedy for this issue is to reset the Internet Explorer's setting to their defaults.



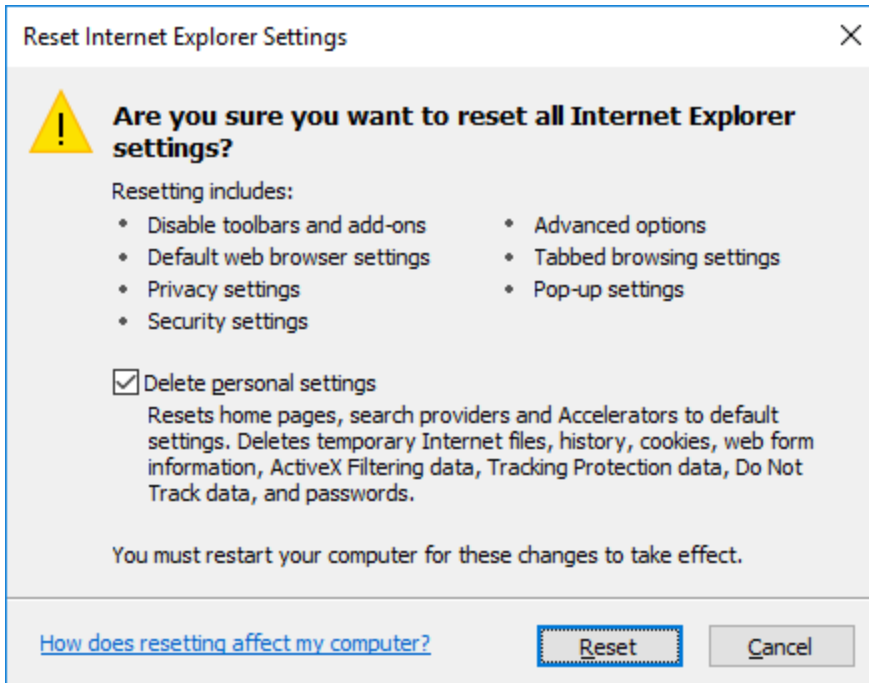
This issue does not occur with Microsoft Edge or Mozilla Firefox. Using one of those browsers will avoid this issue..

To reset the Internet Explorer's setting to their defaults:

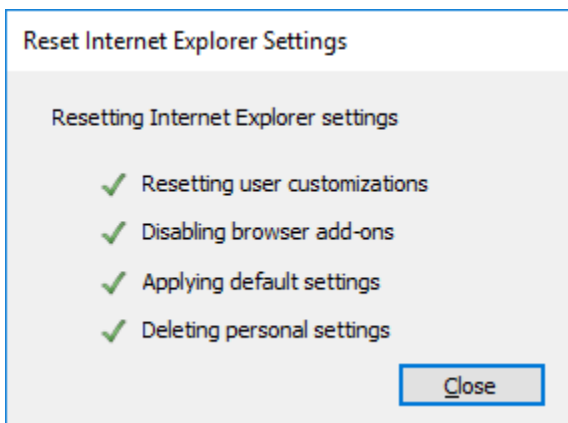
1. Start the Internet Options control panel, and click the **Advanced** tab:



2. Next, click the **Reset** button under “Reset Internet Explorer” settings:



3. Click the **Delete personal settings** checkbox, and click the **Reset** button. Then you should see the following:



4. Click **Close**, Exit Internet Explorer 11, restart it, go to the home page, and the client will launch successfully.

# Chapter 4: Closed Problem Reports

## Closed Problem Reports

---

This chapter itemizes the problem reports closed since the release of Architect/Requirements 11.1.

---

### Closed Problem Reports for Architect/Requirements 11.2

Architect/Requirements 11.2 corrects the problem reports listed in table 5--1.

Release	PR Number	Problem	Description
11.2	7388520	Disable Numbering and TcSE shortcuts	Shortcuts to requirements now support disable numbering. If the "Disable Numbering" choice is set on a requirement's "Document Options" property then shortcuts to the requirement will also honor that setting.
11.2	7957353	VBA Reference Problem - TCSEOpenProcessor.dot	The problem where a TcSE stylesheet's document template is overwritten with TCSEOpenProcessor.dot is fixed. When a TcSE stylesheet is opened in Word the document template is no longer modified.
11.2	8838876	Excel Template has code checking unsupported versions of Excel	The VBA code executed during Excel Live export no reports messages regarding specific versions of Excel.
11.2	9162419	Delayed connection to Teamcenter appear to not be connecting	The TcSE 11.2 client launch performance is greatly improved with the proprietary launch enhancement, which uses a Windows desktop

<b>Release</b>	<b>PR Number</b>	<b>Problem</b>	<b>Description</b>
			launch protocol instead of using Java deployment technologies.
11.2	9225561	Icon overlay can no longer be updated for frozen objects.	Adding an icon overlay on a frozen object is now allowed.
11.2	9286422	TCSE - 11.1 - filter column alignment issue	The problem where the filter column headers could shift to the left when the filter area gained focus is fixed. The filter columns now stay aligned with the content table view.

# Chapter 5: Certifications

## Certifications

Architect/Requirements is a 64-bit application. Both the application server and the database server must be a 64-bit deployment. For a 64-bit Architect/Requirements installation, 64-bit hardware, a 64-bit operating system, and a Web server such as WebLogic, WebSphere, or Tomcat are required. The Architect/Requirements components can be installed on the following operating systems:

- Microsoft Windows Server 2012 R2
- Microsoft Windows Server 2016

For information about versions of operating system, third-party software, and Teamcenter software that are certified for your platform, see the Siemens PLM Software Certification Database at:

[http://support.industrysoftware.automation.siemens.com/certification/tc\\_se.shtml](http://support.industrysoftware.automation.siemens.com/certification/tc_se.shtml)

## Support Removed as of Architect/Requirements 11.2

The following were certified in previous releases, but are no longer supported as of the Architect/Requirements 11.2 release:

### Client Environments

- Windows 7 Operating System

### Server Environments

- <no changes>

# *Index*

Closed problem reports		Problem reports, closed	
Architect/Requirements .....	29	Architect/Requirements .....	29
Global Technical Access Center (GTAC) .....	11	Release content .....	9
Help, technical .....	11	Release support.....	9
Known issues		Systems Architect/Requirements Management	
Use of multiple multilevel lists during export		Release Notes .....	16
causes formatting loss (PR 1878351).....	26	Technical help.....	11
Known issues, Architect/Requirements previous		Third-party products	
releases.....	26	Applications support information .....	10
Open issues		Compatibility .....	9
Use of multiple multilevel lists during export		UGAnswer.....	10
causes formatting loss (PR 1878351).....	26	Use of multiple multilevel lists during export	
Operating system levels .....	9	causes formatting loss (PR 1878351) .....	26