

# What's new in Teamcenter 11.4 TCM

- 11.4 TCM



# Contents

<b>What's new in Teamcenter 11.4 TCM</b> .....	<b>1-1</b>
Quickly propagate objects with changed item IDs from EBOM to MBOM .....	1-1
Easily identify unassigned objects in an MBOM and BOP .....	1-2

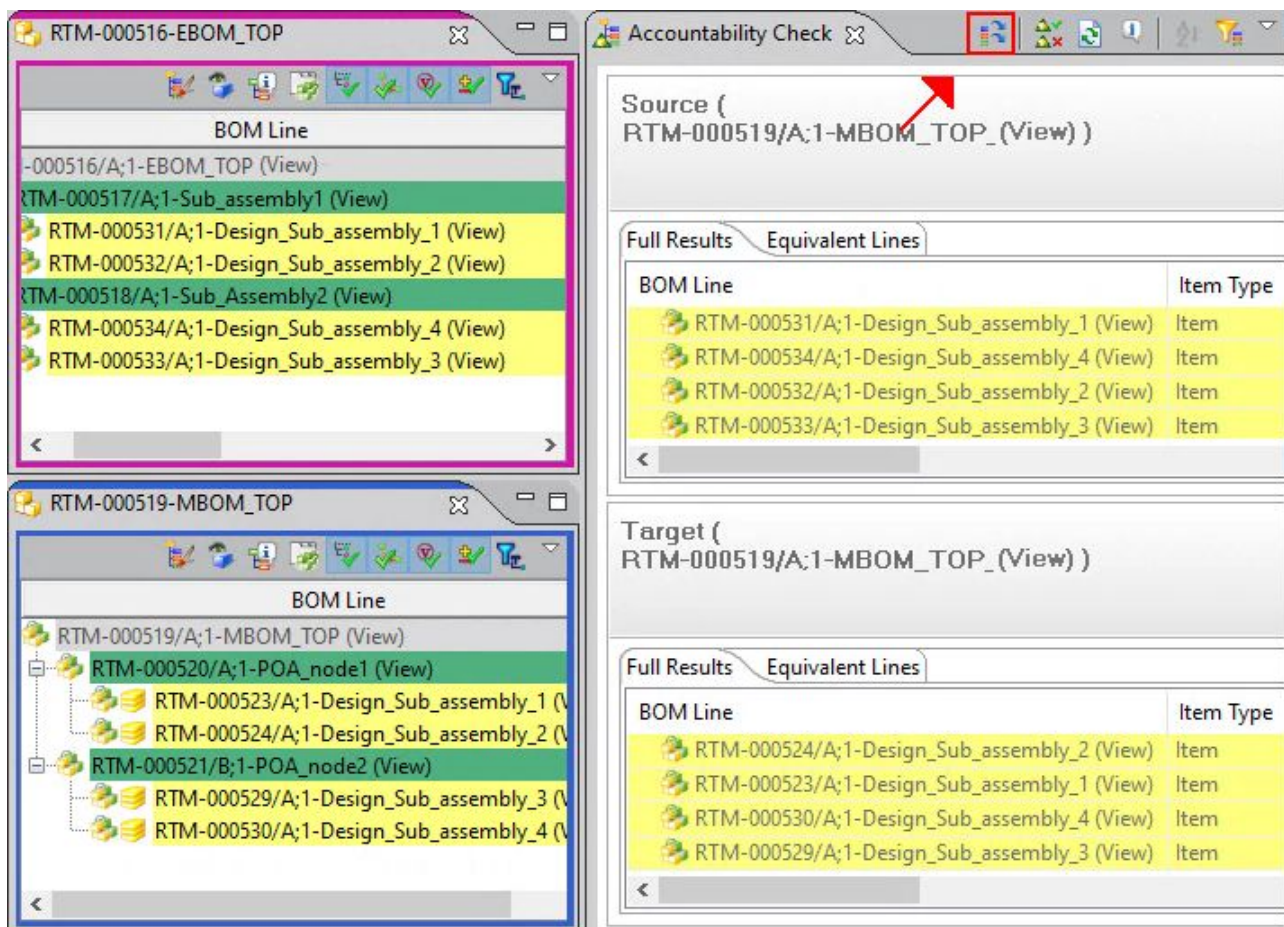


# Chapter 1: What's new in Teamcenter 11.4 TCM


## Quickly propagate objects with changed item IDs from EBOM to MBOM

Many Manufacturing Process Planner customers use part or manufacturing features with item IDs that change from the design to part IDs in the production phase. This previously required you to identify item ID changes in the EBOM by running an advanced accountability check, and then to manually copy and paste each item ID for each impacted part or feature to the MBOM. You can now quickly propagate, in bulk, parts or manufacturing features with item ID changes from an EBOM to an MBOM. To do this, you must set the preference **MEAutoReviseWhilePropagation** to true, and then run an advanced accountability check to show partial matches (to do this, in the **Partial Match** tab and **BOM Properties** subtab, select the **Primary Revision Configured** check box). Partial matches are shown as yellow lines in the image below.

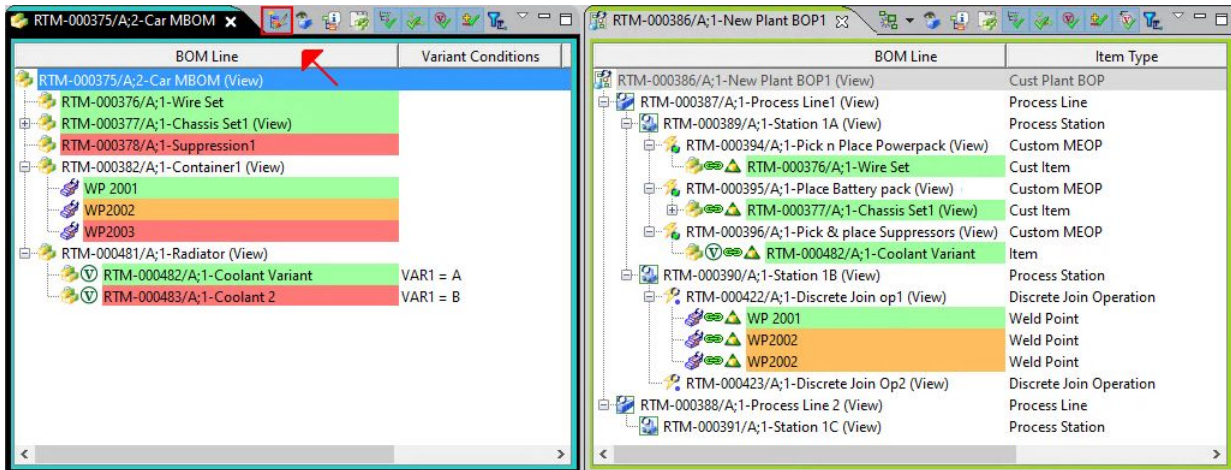
When finished, click **Propagate All Partial Matches** to recursively propagate the changes from EBOM to MBOM. If updates are incomplete, a log file identifies which items failed to propagate and why.



## Easily identify unassigned objects in an MBOM and BOP

You can now easily identify product and manufacturing features in an MBOM that have been consumed by a process in a BOP. Once the MBOM and BOP are linked using the **Link/Associate**→**Associate Product as Target** command, click **Assignment Indication**  to generate colors identical to those used in advanced accountability checks.

Assigned
  Assigned multiple times
  Unassigned





## Siemens Industry Software

### Headquarters

Granite Park One  
5800 Granite Parkway  
Suite 600  
Plano, TX 75024  
USA  
+1 972 987 3000

### Americas

Granite Park One  
5800 Granite Parkway  
Suite 600  
Plano, TX 75024  
USA  
+1 314 264 8499

### Europe

Stephenson House  
Sir William Siemens Square  
Frimley, Camberley  
Surrey, GU16 8QD  
+44 (0) 1276 413200

### Asia-Pacific

Suites 4301-4302, 43/F  
AIA Kowloon Tower, Landmark East  
100 How Ming Street  
Kwun Tong, Kowloon  
Hong Kong  
+852 2230 3308

## About Siemens PLM Software

Siemens PLM Software, a business unit of the Siemens Industry Automation Division, is a leading global provider of product lifecycle management (PLM) software and services with 7 million licensed seats and 71,000 customers worldwide. Headquartered in Plano, Texas, Siemens PLM Software works collaboratively with companies to deliver open solutions that help them turn more ideas into successful products. For more information on Siemens PLM Software products and services, visit [www.siemens.com/plm](http://www.siemens.com/plm).

© 2018 Siemens Product Lifecycle Management Software Inc. Siemens and the Siemens logo are registered trademarks of Siemens AG. D-Cubed, Femap, Geolus, GO PLM, I-deas, Insight, JT, NX, Parasolid, Solid Edge, Teamcenter, Tecnomatix and Velocity Series are trademarks or registered trademarks of Siemens Product Lifecycle Management Software Inc. or its subsidiaries in the United States and in other countries. All other trademarks, registered trademarks or service marks belong to their respective holders.