

The Siemens logo is displayed in a white rectangular box in the upper left corner of the page. The logo itself is the word "SIEMENS" in a bold, teal, sans-serif font. The background of the entire page is a low-angle photograph of a modern glass skyscraper, with the sky and clouds visible through the glass panels.

SIEMENS

Preparation Guide of SAP S/4HANA® Teamcenter Gateway for SAP S/ 4HANA Edition

Contents

Preface 3

Introduction 1-1

Supported SAP Products 2-1

Software Prerequisites to Run Teamcenter Gateway for SAP S/4HANA

Legal Information	3-1
How to Obtain the SAP and SAP GUI Release and Patch Level Information	3-1
Netweaver RFC SDK	3-3
JCO (Java Connector) Libraries	3-4
SAPftp and SAPhttp	3-5
SAP GUI for HTML Support	3-5
Services for the SAP GUI for HTML	3-5
Internet Transaction Server Configuration	3-8
Internet Services SYSTEM and WEBGUI	3-8
SAP Transactions via the SAP Portal Support	3-9
SAP OSS Notes (Patches)	3-10

SAP Function Calls Used and Permissions Required

SAP Function Calls Used and Permissions Required by Teamcenter Gateway for SAP S/4HANA	4-1
UCON Blacklist	4-2

SAP Transport Packages for Teamcenter Gateway for SAP S/4HANA Functionality 5-1

Set Up to Trigger Data Transfer From SAP to Teamcenter

Overview	6-1
Table Definition /TESISPLM/ZPTC	6-2
Z-Table ABAP Functions	6-3
SAP Event Trigger	6-4

Glossary A-1

Preface

This documentation cannot be used as a substitute for consulting advice, because it can never consider the individual business processes and configuration. Despite our best efforts it is probable that some information about functionality and coherence may be incomplete.

Issue: November 2018

Legal notice:

All rights reserved. No part of this documentation may be copied by any means or made available to entities or persons other than employees of the licensee of the Teamcenter Gateway for SAP S/4HANA® or those that have a legitimate right to use this documentation as part of their assignment on behalf of the licensee to enable or support usage of the software for use within the boundaries of the license agreement.

© 2017-2018 Siemens Product Lifecycle Management Software Inc.

Trademark notice:

Siemens, the Siemens logo and SIMATIC IT are registered trademarks of Siemens AG.

Camstar and Teamcenter are trademarks or registered trademarks of Siemens Product Lifecycle Management Software Inc. or its subsidiaries in the United States and in other countries.

Oracle is a registered trademark of Oracle Corporation.

SAP, R/3, SAP S/4HANA®, SAP Business Suite® and mySAP are trademarks or registered trademarks of SAP or its affiliates in Germany and other countries.

TESIS is a registered trademark of TESIS GmbH.

All other trademarks, registered trademarks or service marks belong to their respective holders.



1. Introduction

The Teamcenter Gateway for SAP S/4HANA (**T4S4**) software solution is a general purpose integration software that provides data and process integration between Teamcenter® by Siemens Product Lifecycle Management Software Inc. and SAP S/4HANA® by SAP AG.

T4S4 provides a wide range of interactive and workflow functions to transfer and synchronize data between Teamcenter and SAP S/4HANA®.

2. Supported SAP Products

Please see: [How to obtain the SAP GUI release and patch level information](#)

The latest information on supported products is available in the readme file *Teamcenter_Gateway_for_S4HANA_18.2_README_for_Teamcenter_*.txt*. It can be downloaded from **GTAC** from Teamcenter and TeamcenterRapid Start / Integrations directory.

Teamcenter Gateway for SAP S/4HANA 18.2 supports SAP S/4HANA® on-premise edition 1610 and 1709.

Caution:

SAP S/4HANA® is not supported by Teamcenter Gateway for SAP Business Suite! Teamcenter Gateway for SAP S/4HANA is offered for this platform.

Please also see <https://launchpad.support.sap.com/#/notes/147519> for supported products.

SAP GUI for Windows Support Deadlines:

- 7.40: Full support up to January 9th, 2018. Restricted support until June 30th, 2018. No extended support is offered
- 7.50: Full support up to April 9th, 2019. Restricted support until September 30th, 2019. No extended support is offered.

3. Software Prerequisites to Run Teamcenter Gateway for SAP S/4HANA

3.1 Legal Information

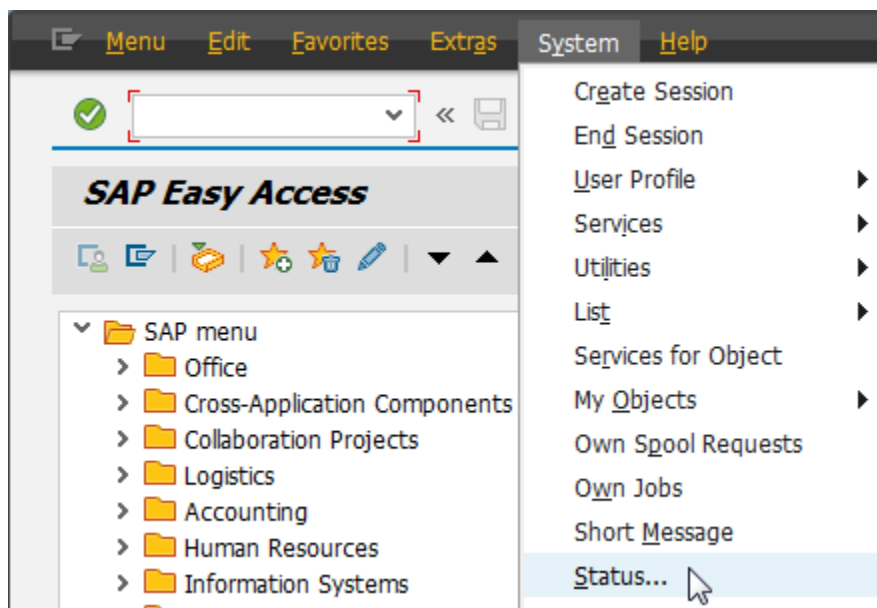
SAP does not allow their software partners to ship files owned by SAP. As a result, some of the files T4S4 requires to communicate with SAP are not included in the T4S4 installation package and need to be obtained directly from **SAP ONE Support Launchpad** or with the help of your SAP support partner.

In order to download software from the **SAP ONE Support Launchpad**, a valid web login with user and password is necessary.

3.2 How to Obtain the SAP and SAP GUI Release and Patch Level Information

SAP Version

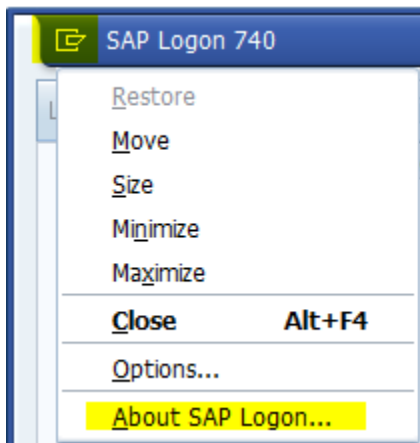
In the main menu point System – Status, check the point "Component version".



System: Status			
Usage data			
Client	800	Previous logon	20.02.2017 11:13:03
User	TPUSER01	Logon	13:38:59
Language	EN	System time	13:50:48
SAP data			
Repository data		SAP System data	
Transaction	SESSION_MANA...	Component version	SAP ECC 6.0
Transaction variant	#####...	Installation number	0020211441
Program (screen)	SAPLSMTR_NAV...	License expiration	31.12.9999
Screen number	100	Unicode System	Yes
Program (GUI)	SAPLSMTR_NAV...		
GUI status	SESSION		
Host data		Database data	
Operating system	Linux	Database system	ORACLE
Machine type	x86_64	Release	10.2.0.2.0
Server name	sapsrv_ET1_20	Name	ET1
Platform ID	390	Host	sapsrv
		Owner	SAPSR3

SAP GUI Version:

In the SAP logon window, click on the icon in the upper left corner (where you may minimize and close windows by default) and select "About SAP logon". Then a new window opens that shows the information. Example from a SAP GUI 7.40 with patch level 0:



3.3 Netweaver RFC SDK

Depending on the SAP system configuration those file versions may be different. Unfortunately T4S4 cannot check which are the correct files, so in case of a problem with SAP communication (in most cases in DIR handling only) please ask your SAP specialist for help and provide the correct files. The SAP RFC SDK can be downloaded from the [SAP ONE Support Launchpad](#)

The corresponding files have to be copied into the GS bin directory (`<T4x_GS_ROOT>\bin64`):

- libsapnwrfc.dll (.so)
- libsapucum.dll (.so)
- libicudecnumber.dll (.so)

For more details, please read `<T4x_GS_ROOT>\bin64\readme.sapnwrflib`

Caution:

If the Netweaver runtime library files are missing, the GS will not start.

As the GS can still use some SAP JCO functionalities, it additionally may require the JCO runtime libraries.

If the correct version of the files can't be clearly identified, the best possibility to find the correct package is downloading several packages from SAP and checking if the T4S4 transaction is successful. In order to avoid a long search, first check the following in the SAP GUI: [How to obtain the SAP GUI release and patch level information](#). Then try downloading only the packages from SAP with similar descriptions.

3.4 JCO (Java Connector) Libraries

Using JCO may not be necessary for the basic T4S4 functionality. Examples where JCO may be necessary are:

- Some T4x web services.
- A couple of not yet migrated standard T4S4 functions are still using the JCO adapter at the moment, this are in the following areas:
Routing Change
Material Batches
iPPE
Project System
Manufacturing functionality, especially Routing Transfer .
- Any customer specific functionality using JCO (reading or writing SAP fields that are inaccessible by the default SAP mechanisms).
In previous T4S versions, custom SAP functions where called via JCO. This will still be the case until the code has been replaced with generated code for the NW interface.
- Some T4S4 features use the SAP JCO adapter without telling it explicitly.

T4S4 uses SAP JCO Release 3.0.9 (or higher) for all platforms. This version can be downloaded on the SAP Service Marketplace. Depending on the hardware and OS platform (Windows, UNIX, Linux), you need a different JCO package. This Java process is independent from the Java process started with Teamcenter, it may use completely different environment settings.

The system hardware determines the package where to take the SAP JCO library files from. In Linux/UNIX, the command `uname -a` tells some details. As not every hardware is certified with Teamcenter, you may refer to the [hardware and software certifications](#) to exclude some hardware packages.

Required files:

- sapjco3.dll (.so)
- sapjco3.jar
- sapjco3.pdb

For more details, please see `<T4x_GS_ROOT>\bin64\readme.sapnwrflib`.

Caution:

The Java version used in your machines determines whether the 32-bit or 64-bit libraries are used. Depending on the Java version, it might be necessary to use the 32-bit JCO package even on a 64-bit system. In a command shell, enter `java -version`. Check the output: if it does not state anything about 64 bit, it is a 32-bit Java version and needs the 32-bit JCO package. The minimum required Java version for SAP JCO is JSE 1.7.0.

3.5 SAPftp and SAPhttp

T4S4 may use the SAP tools SAPftp and SAPhttp for doing the check-in of original files to a SAP DIR. The SAPftp and SAPhttp programs can be downloaded on the **SAP ONE Support Launchpad**. The corresponding files must be copied into the T4S bin directory `<T4x_GS_ROOT>\bin64`. They have to match the ones in used by your SAP system. This can be checked in a command shell as follows:

Example: `C:\temp>C:\PLM\T4S_Apps\bin64\sapftp.exe -V`

```
SAPFTP Unicode
(#) $Id: //bas/753_REL/src/krn/ftp/ftpmainnw.c#3 $ SAP
(#) $Id: //bas/753_REL/src/krn/ftp/ftpnw.c#1 $ SAP
@(#) $Id: //bas/753_REL/src/krn/ftp/ftpcmdnw.c#1 $ SAP
SAP release: 753 SAP release no: 7530
```

For more details, please see `<T4x_GS_ROOT>\bin64\readme.sapnwrfclib`

3.6 SAP GUI for HTML Support

T4S4 also supports the so called SAP GUI for HTML for a set of display functions (which can be configured via the corresponding T4S Gateway Menu preference). The functionality is based on the Internet Transaction Server (ITS) of the SAP system. More details can be found in the corresponding SAP documentation. This chapter gives an overview of the relevant basic configuration steps.

3.6.1 Services for the SAP GUI for HTML

With the SAP transaction `SICF` it is possible to validate the status of the following services:

- `/sap/public/bc/its/mimes`
- `/sap/bc/gui/sap/its/webgui`

Both have to be activated.

The screenshot shows the SAP Service Host configuration interface. At the top, there is a menu bar with 'Service/Host', 'Edit', 'Goto', 'Client', 'System', and 'Help'. Below the menu is a toolbar with various icons. The main window is titled 'Maintain service' and contains a toolbar with 'Create Host/Service', 'External Aliases', and 'System Monitor Inactive'. Below this is a 'Filter Details' section with input fields for 'Virtual Host', 'Service Path', 'ServiceName', 'Description', 'Lang.' (set to English), and 'Ref.Service:'. There are 'Apply', 'Reset', and 'Fine-Tune' buttons. The main area is a tree view of services under 'Virtuelle Hosts / Services'. The tree is expanded to show 'sap' > 'public' > 'bc' > 'its' > 'mimes'. The 'mimes' service is highlighted with a blue selection bar. The table below the tree lists the services and their descriptions.

Virtuelle Hosts / Services	Documentation	Referenz Service
default_host	VIRTUAL DEFAULT HOST	
sap	SAP NAMESPACE; SAP IS OBLIGED NOT T...	
option	RESERVED SERVICES AVAILABLE GLOBALLY	
public	PUBLIC SERVICES	
bc	Basis Tree (Basis Functions)	
abap	Services from NW Foundation ABAP	
icf	Internet Communication Framework	
icons	SAP Icons	
icons_rtl	Icons RTL	
its	Internet Transaction Server (ITS)	
design	Service for MIME Repository	
mimes	MIME Repository	
mobile	ITS Mobile Start Services	
NWDEMO	NW demo model	
NW_ESH	NW Enterprise Search (Test Automation)	
pictogram	Pictograms	
sec	Security Node	
sicf_login	Test for ICF System Logon	
trex	TREX	
ur	Unified Rendering	

Create/Change a Service

Path: /default_host/sap/public/bc/its/

Service Name: Service (Active)

Lang.:

Description

Description 1	<input type="text" value="MIME Repository"/>
Description 2	<input type="text"/>
Description 3	<input type="text"/>

Service Data | Logon Data | Handler List | Error Pages | Administration

Service Options

Web Service

Do Not Include Inherited Settings

Load Balancing:

SAP Authoriz.:

Session Timeout: (HH:MM:SS)

Compression:

Interactive Options

GUI Link	<input type="text" value="Not specified"/>	<input type="button" value="GUI Configuration"/>
Support Accessibility	<input type="text" value="Not specified"/>	

The screenshot shows the SAP Service Configuration interface for a service named 'webgui'. The path is set to '/default_host/sap/bc/gui/sap/its/'. The service is active and the language is set to English. The description is 'SAP GUI for HTML'. The 'Service Options' section includes checkboxes for 'Web Service' and 'Do Not Include Inherited Settings', both of which are unchecked. Other options include 'Load Balancing', 'SAP Authoriz.', 'Session Timeout' (00:00:00), and 'Compression' (Yes). The 'Interactive Options' section includes 'GUI Link' (Yes) and 'Support Accessibility' (No). A 'GUI Configuration' button is visible.

3.6.2 Internet Transaction Server Configuration

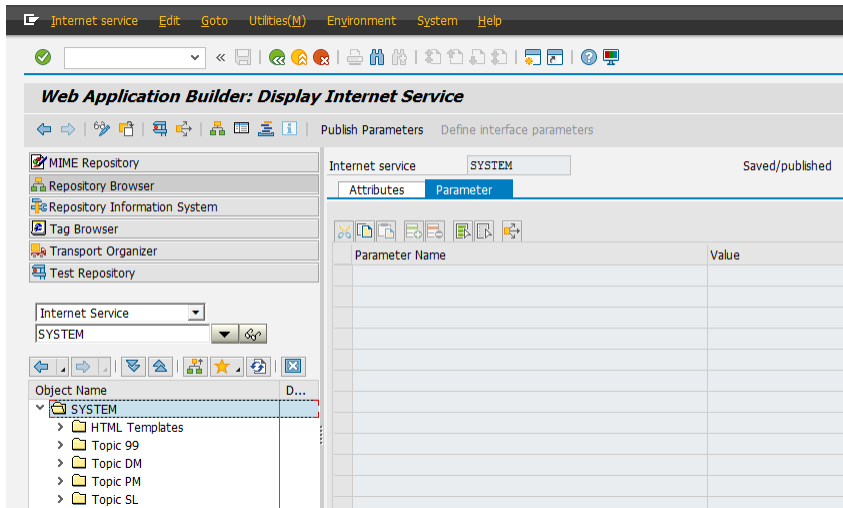
Use transaction SE80 to validate the ITS configuration:

Utilities > Settings > Internet Transaction Server (Tab) > Publish (Tab).

Selecting "Integrated ITS" restricts the publication in the next step to the integrated Internet Transaction Server.

3.6.3 Internet Services SYSTEM and WEBGUI

For the SAP GUI for HTML it is necessary that the "Internet Services" SYSTEM and WEBGUI are published. By this they can be called by a web browser. This status check of the internet services can be managed via the SAP transaction code SE80. If needed the services can be published by the context menu > Publish > Complete Service.



3.7 SAP Transactions via the SAP Portal Support

Beside the T4S4 support for the SAP GUI for HTML it is also possible to call the corresponding display transactions via the SAP Portal iView URL. This chapter will show the configuration steps that are necessary to enable the feature.

Caution:

The SAP system configuration requires special SAP permissions.

Please ask your SAP service provider for the SAP Portal iView URL which can be used in a web browser.

The following SAP web link shows details how to handle that functionality from SAP directly. It needs a login with a SAP customer account: <http://scn.sap.com/docs/DOC-52102>

For testing purposes, it should be possible to call the SAP Transaction iView directly via the following URL pattern:

```
http://<portal_host>:<portal_port>/irj/portal?NavigationTarget=
ROLES://portal_content/<ContentFolder>/sap_transaction_iview&System=
<ABAP_System_Alias>&TCode=[*]<TCode>
%20<param_name1>=<value1>;<param_name2>=
<value2>&GuiType=<GuiType>
```

The following table shows the definition of the used placeholders (variables) and their corresponding meaning:

Variable	Description
<ContentFolder>	The folder name that was used during the preparation of the iView copy, e.g. TESIS
<ABAP_System_Alias>	The ABAP backend system alias as defined in the portal, e.g. de_tesis_ET2_800
<TCode>	The SAP transaction code. If preceded by a * it will be executed immediately, e.g. *MM03
<param_name1>	The name of the first parameter for the transaction screen (optional), e.g. RMMG1-MATNR
<value1>	The value for the first parameter of the transaction screen, e.g. P-100
<GuiType>	The SAP GUI type to use. This can be either WebGui (SAP GUI for HTML) or WinGui (SAP GUI for Windows). The value is case sensitive!

In this example the transaction MM03 (Material Master Display) is started within the SAP Portal for the material P-100 using the SAP GUI for HTML representation of the transaction:

```
http://sap1.xy.de:55000/irj/portal?NavigationTarget=ROLES://
portal_content/
TESIS/
sap_transaction_iview&System=de_tesis_ET2_800&TCode=*MM03%20RMMG1-MATNR=
P-100&GuiType=WebGui
```

The required T4S4 configuration for the specific SAP system is described in the [Teamcenter Gateway for SAP S/4HANA - Configuration Guide](#), chapter *Configure the T4S Gateway Menu Options*.

3.8 SAP OSS Notes (Patches)

Depending on the implemented functionality and use cases, it might be required to implement certain OSS notes in order to fix known in SAP:

- <https://launchpad.support.sap.com/#!/notes/>
- <https://support.sap.com/software/patches.html>

The following functionalities are affected:

- All
- Material Master
- Document Info Record File Transfer

- Routing
- Project BOM / WBS BOM / Functional Location BOM
- Characteristic / Product Configurator / Class Sync

All

The following Package must be implemented:

2408634 - Incompatible change of function module RFC_GET_SAP_SYSTEM_PARAMETERS

Material Master

The following OSS Notes fix issues with Material Master functionality:

- Add note for mandatory OSS note 2340659 for the OLD_MAT_NO issue.
- Add note for mandatory OSS note 2406960 for the material number conversion issue.
- Add note for recommended OSS note 2400601 and 2406960.
- Add note for mandatory OSS note 2340659 (BAPI_MATERIAL_SAVEDATA OLD_MAT_NO issue).
- Add note for mandatory OSS note 2287625 (Changed behavior of material mapping at interfaces for extended material number functionality).

Document Info Record File Transfer

The following OSS notes are known to create problems with original file check-in and may have to be removed:

- 1692988
- 1605054

Routing

If released for the target SAP, the following OSS notes must be implemented in order to ensure that the SAP Routing Create and the T4S Routing Change code works as expected:

- | | |
|----------------|---|
| 1481676 | EWB: Component assignment creates incorrect PLMZ entries |
| 1734785 | EWB: Error during component assignment (change states) |
| 1946879 | EWB: The task list sequence is incorrectly saved (reference node) |

- 1388025** Reassigning component assignment to parallel sequence
- 1915244** Lange Laufzeit oder Dump bei der Synchronisierung (3) (this patch is not mandatory, but recommended)
- 1966556** RCA: Error caused by SAP Note 1915244 (this note must be installed when note 1915244 is in the system)

The following notes are not required by the Routing Create/Change APIs, but recommended for general use (SAP GUI):

- 2118418** Inconsistent Component Allocation from CEWB due to incorrect entry in PLZU Table
- 2106108** Multiple Component Allocations for a single BOM component to the same sequence or parallel sequence.

Project BOM / WBS BOM / Functional Location BOM

If a special BOM type (e.g. Project BOM - also known as WBS BOM, Functional Location BOM or Equipment BOM) is changed by T4S in SAP using a change number, all BOM lines will be referenced with the change number even though they have not been changed.

Download and implement SAP OSS note 1992647: CSAI_BOM_MAINTAIN: All positions are updated with the new change number even though only one position is changed.

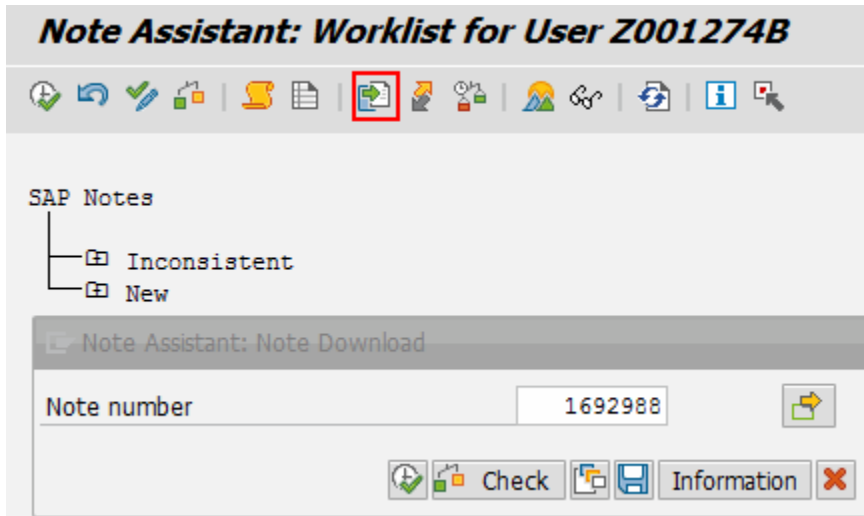
Characteristic / Product Configurator / Class Sync

If released for the target SAP, the following OSS notes must be implemented in order to ensure that T4S characteristic transfers (e. g. class sync, product configurator, ...) work as expected:

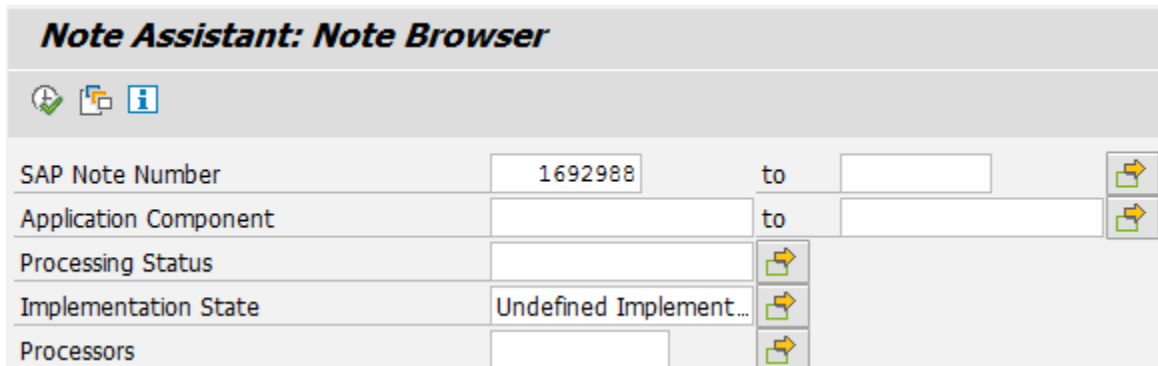
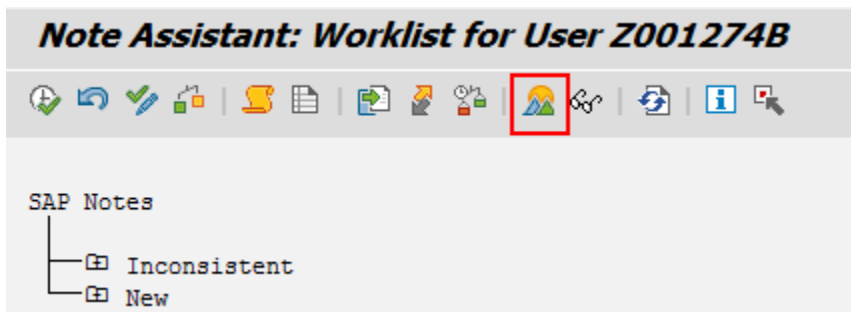
OSS Note 1684377 (BAPI: Long runtime III): Due to an error in SAP Notes 1640511 and 1604614, the system may not recognize changes to characteristics correctly.

Checking the Implementation of OSS Notes

First you need to open the SAP Transaction `SNOTE`. Then you can download the Note in your repository (this may take a while):



After that you can find it with the Note Browser:



Note	Version	Short text	Applic. Component	Status	Implementation State	User
1692988	11	Directory traversal in SFTP modules	BC-SRV-COM-FTP	new	Cannot be implemented	

4. SAP Function Calls Used and Permissions Required

4.1 SAP Function Calls Used and Permissions Required by Teamcenter Gateway for SAP S/4HANA

Mandatory Functions

The following RFC access permissions are needed in any case:

- function group SYST
- RFC_PING
- SYSTEM_RESET_RFC_SERVER
- SCSI_GET_SYSTEM_INFO
- RFC_GET_FUNCTION_INTERFACE

Overview of Functions

A complete overview of SAP functions that could be called can be found in the [T4S4 API Reference](#) under *List of SAP Function Groups and Functions used by T4S4*:



The calls are grouped by permissions.

List of actually Used Function Calls

T4S4 provides a log file that lists all actually used function calls after they have been used. Ideally you get all SAP permissions for the T4S4 user(s) during development. Then after development is complete, you can extract a list of functions from the log and give it to your SAP administrator to limit the SAP permissions for the testing phase.

In the BGS Admin UI you will find the logfile `sys/sap_function_calls.log`. It contains a list off all called SAP functions. Please see *Configure T4x BGS Using BGS Admin UI* in the [Teamcenter Gateway - Installation Guide](#) on how to login to the Admin UI. Please use the help function of the Admin UI for more details.

Caution:

The logfile does not list the following "connector internal" calls:

- RFC_PING
- RFC_GET_FUNCTION_INTERFACE
- DDIF_FIELDINFO_GET
- SYSTEM_RESET_RFC_SERVER

4.2 UCON Blacklist

The UCON Blacklist prevents external applications such as T4S to work properly with SAP S/4HANA®. Siemens PLM Software provides a SAP Transport Package with wrapper functions. This way T4S can be re-enabled to communicate with SAP. It is not required to expose the RFC function modules by disabling the UCON Blacklist.

With SAP S/4HANA® version 1511 SPO2 and higher, SAP uses the UCON Blacklist functionality to block certain RFC function modules. The reason for this is that many API calls (BAPIs) have been changed, and may not be backwards compatible. So the result could be that inconsistent or wrong data is being committed to the database. In order to avoid such an issue without even being recognized by the client caller (e.g. T4S4), this blacklist was introduced to block all APIs which have been changed in an incompatible way.

T4S4 Version 18.2 and higher is fully compatible with the above mentioned API changes done by SAP. However the UCON Blacklist prevents external applications such as T4S4 to work properly with SAP S/4HANA®.

When a blocked remote enabled function module (RFC FM) is called from an external client on a SAP S/4HANA® system, an error is raised and shown to the caller with the following error text:

```
"UCON RFC Rejected; Called Function :<RFC FM NAME>; Caller SID :<SID of Client>; Caller Program :<Caller program from which RFC call is made>".
```

Example from T4S4:

```
Error Message: RFC code = 4 (RFC_ABAP_MESSAGE) :: Incompatible Call Rejected, see note 2295840; Called Incompatible Function :RFC_GET_SAP_SYSTEM_PARAMETERS; Caller Program :nwpipe; Caller Dest. :demchdc81!
```

More information and a list of BAPIs being blocked by this blacklist can be downloaded via the following OSS note:

2259818 - RFC enabled Function Modules with incompatible signature change compared to its version in ERP are blocked from external access

Importing and enabling the UCON Transport Packages

All required information can be found in the readme file that comes with the Transport Packages:

```
<T4x_GS_ROOT>\var\template\t4s\sap\TransportPackages\UCON\readme.txt
```

It can be located in the T4S4 GS installation package that is available on [GTAC](#).

5. SAP Transport Packages for Teamcenter Gateway for SAP S/4HANA Functionality

In order to implement enhanced SAP ABAP functionality provided by Siemens Industry Software, T4S4 offers SAP transport packages to add the required additional functionality to SAP.

A complete description of the Transport Packages can be found in the file `<T4x_GS_ROOT>\var\template\t4s\sap\TransportPackages\readme.txt`. You will find the transport packages in the directory `<T4x_GS_ROOT>\var\template\t4s\sap\TransportPackages`.

The complete list of Transport Packages is documented in the [T4S4 API Reference](#):

T4S4 > List of SAP Function Groups and Functions used by T4S4

Caution:

Same as the T4S4 code itself, the ABAP code T4S4 provides in the SAP transport packages may change. If you are using such an ABAP please make sure to update it as well when T4S4 is updated.

In order to check if you already have the latest package, do the following: In both your T4S4 installations (the new and the old one), go to the directory `<T4x_GS_ROOT>\var\template\t4s\sap\TransportPackages`. Open each zip file that contains an ABAP you implemented in your SAP (e.g. `TESISPLM_T4S_MISC.zip`). Find there one file `K900*.ET1` and one file `R900*.ET1` each (e.g. the two files `K900123.ET1` and `R900123.ET1`). If you find exactly the same file names in the old and the new T4S4 version, then everything is OK. If the number in the name (representing the ABAP version number of this specific ABAP code), in the new T4S4 installation is higher than in the old one, you have to update the ABAP in SAP to the new one.

6. Set Up to Trigger Data Transfer From SAP to Teamcenter

6.1 Overview

Common use case examples:

- An object or a structure is created first in SAP and needs to be transferred to Teamcenter.
- Information on a SAP object is changed and needs to be updated on the corresponding Teamcenter object.

The Z-Table is a transparent custom table in the SAP database. It is used for cases where data transfer needs to be triggered from within SAP to Teamcenter. Creating an entry for an object in the table is usually triggered by a SAP event like "save material master data". On this event a user exit or some other BADI functions catches the object data and can use ABAP functions to create an entry for that object.

- Import Transport Package TESISPLM_T4S_ZPTC
The Z-Table and ABAP functions to maintain it are provided by Siemens PLM. The Transport Package TESISPLM_T4S_ZPTC to create Z-Table and ABAP functions is stored here: <T4x_GS_ROOT>\var\template\t4s\sap\TransportPackages\TESISPLM_T4S_ZPTC.zip
All the functions and the database table itself are created within the namespace /TESISPLM/.

Caution:

Only the `_INT/ _INTERN` functions should be used within SAP user exists or BADIs as they will not perform additional RFC authority checks.

- Set Up the Number Range
Please see [Table Definition /TESISPLM/ZPTC](#).
- Configure the Event-Trigger (User-Exit)
Please see [SAP Event Trigger](#).
- Configure the Trigger Script and Import Mapping
This is described in the Chapter [Configure the Data Import](#) in [Teamcenter Gateway for SAP S/4HANA - S/4HANA Preparation Guide](#).

6.2 Table Definition /TESISPLM/ZPTC

Table attributes

Description	Production Trigger Cache
Delivery Class	A
Maintenance	Check "Table maintenance allowed"

Table Fields

Fields	Key	Int.	Field Type	Data Type	Length	Dec. places	Check Table
MANDT	X	X	MANDT	CLNT	3	0	T000
ID	X	X	INT4	INT4	10	0	
OBJECT_TYP			CHAR10	CHAR	10	0	
OBJECT_ID			CHAR80	CHAR	80	0	
OBJECT_DESC			CHAR255	CHAR	255	0	
REASON1			CHAR255	CHAR	255	0	
REASON2			CHAR255	CHAR	255	0	
STATUS_E2S			CHAR1	CHAR	1	0	
ERROR_MSG1			CHAR255	CHAR	255	0	
ERROR_MSG2			CHAR255	CHAR	255	0	
ERROR_MSG3			CHAR255	CHAR	255	0	
DELETED			CHAR1	CHAR	1	0	
CREATED_DATE			DATE_	DATS	8	0	
CREATED_TIME			TIME_	TIMS	6	0	
CREATED_USER			ERNAM	CHAR	12	0	
CHANGED_DATE			DATE_	DATS	8	0	
CHANGED_TIME			TIME_	TIMS	6	0	
CHANGED_USER			AENAM	CHAR	12	0	

Table Settings

Data Class	APPL1
Size Category	9
Buffering	Check "Buffering not allowed"

Number Range for Indexes

Caution:

The database table doesn't contain out of the box configured indexes. Adding such indexes is a customization step based on the individual use cases the table should be used for.

To assign IDs automatically on creation of table entries we need to define a number range object in SAP. Please follow these steps:

1. Create the Number Range Object ZPTC (Transaction SNRO)

Number Length Domain: /TESISPLM/ZPTC

Number range transaction: ZPTC

Warning %: 5

Buffer: 1

2. Create an interval (Transaction ZPTC):

Number: 01; From number: 0000000001; To number: 2147483640 (not external)

6.3 Z-Table ABAP Functions

The following functions are required with the Z-Table. Please also see [SAP Function Calls Used and Permissions Required](#).

/TESISPLM/ZPTC_INSERT

To insert one line into the table

/TESISPLM/ZPTC_INSERT_INTERN

To insert one line into the table - internal, not remote enabled call without RFC authority check - should be used for SAP user exits calls only.

/TESISPLM/ZPTC_UPDATE

To update one line of the table.

/TESISPLM/ZPTC_UPDATE_INTERN

To update one line of the table - internal, not remote enabled call without RFC authority check - should be used for SAP user exits calls only.

/TESISPLM/ZPTC_DELETE

To delete one line of the table.

/TESISPLM/ZPTC_DELETE_INTERN

To delete one line of the table - internal, not remote enabled call without RFC authority check - should be used for SAP user exits calls only.

/TESISPLM/ZPTC_GET_DETAIL

To read one complete line of the table.

/TESISPLM/ZPTC_GET_DETAIL_INT

To read one complete line of the table - internal, not remote enabled call without RFC authority check - should be used for SAP user exits calls only.

/TESISPLM/ZPTC_DYN_SEARCH

To read the ids of the table which fulfill a given pattern.

/TESISPLM/ZPTC_DYN_SEARCH_INT

To read the ids of the table which fulfill a given pattern - internal, not remote enabled call without RFC authority check - should be used for SAP user exits calls only.

/TESISPLM/ZPTC_DYN_DELETE

To delete the lines of the table which fulfill a given pattern.

/TESISPLM/ZPTC_DYN_DELETE_INT

To delete the lines of the table which fulfill a given pattern - internal, not remote enabled call without RFC authority check - should be used for SAP user exits calls only.

/TESISPLM/ZPTC_DYN_SEARCH

To read the ids of the table which fulfill a given pattern.

/TESISPLM/ZPTC_DYN_SEARCH_INT

To read the IDs of the table which fulfill a given pattern - internal, not remote enabled call without RFC authority check - should be used for SAP user exits calls only.

/TESISPLM/ZPTC_DYN_DELETE

To delete the lines of the table which fulfill a given pattern.

/TESISPLM/ZPTC_DYN_DELETE_INT

To delete the lines of the table which fulfill a given pattern - internal, not remote enabled call without RFC authority check - should be used for SAP user exits calls only.

6.4 SAP Event Trigger

All transfers of data to Teamcenter will be event triggered only. There is currently no option to provide interactive user actions to initiate data transfer in SAP GUI. Therefore you need to extend available user exits on user actions or else activate BADI in a desired way.

Example on User-Exit Modification

SAP provides user exists on some objects and actions. Please read the SAP documentation to find the required user exit to support your use case.

This example explains the modification of the user exit on a Material Master save action (transaction MM01 or MM02). The code checks if an entry in ZPTC for this Material Master already exists. The function /TESISPLM/ZPTC_INSERT is used to create an entry. Otherwise the existing entry will be updated by /TESISPLM/ZPTC_UPDATE:

```
Enhancement (SMOD): MGA00001
UserExit: EXIT_SAPLMGMU_001
Include: ZXMG0U02
```

Code (Example):

```
data: r1(18) type c,
      r2(18) type c,
      l_matnr type zptc-object_id,
      l_description(255) type c,
      l_blnDouble type string,
      l_id_update(18) type c,
      l_matnr_long(255) type c,
      l_str_zptc type ZPTC,
      l_mara type MARA.
```

```
* Map Information we need from the Material
l_matnr = wmara-matnr.
l_description = 'Triggered by MM user exit!'.
l_matnr_long = l_matnr.

* just some defaults
l_blnDouble = 'false'.
l_id_update = ''.

* Check if the Object exists already in the Table
clear l_str_zptc.
Select SINGLE * INTO l_str_zptc FROM ZPTC
where STATUS_E2S = '' and
      DELETED = '' and
      OBJECT_TYP = 'MATERIAL' and
      OBJECT_ID = l_matnr.
if not ( l_str_zptc is initial ).
  l_id_update = l_str_zptc-id.
  condense l_id_update no-gaps.
  l_blnDouble = 'true'.
endif.
```

```

* H -> New material; V -> Changed material
* if wstat-AKTYP = 'V'.
  if l_blnDouble = 'false'.
    CALL FUNCTION '/TESISPLM/ZPTC_INSERT_INTERN'
* for old installation function name is 'Z_M2S_ZPTC_INSERT'
  EXPORTING
    obj_typ = 'MATERIAL'
    obj_id = l_matnr
    obj_desc = l_description
    reas1 = ''
    reas2 = ''
    stat_e2s = ''
    err1 = ''
    err2 = ''
    err3 = ''
  IMPORTING
    e_return = r1
    e_id = r2.
* if the entry exists already in the table
* (but was not modified yet), we update the entry
else.
  l_description = 'Updated by MM user exit!'.
  CALL FUNCTION '/TESISPLM/ZPTC_UPDATE_INTERN'
* for old installation function name is 'Z_M2S_ZPTC_UPDATE'
  EXPORTING
    I_ID = l_id_update
    I_OBJ_TYP = ''
    I_OBJ_ID = ''
    I_OBJ_DESC = l_description
    I_REA1 = ''
    I_REA2 = ''
    I_STAT_E2S = ''
    I_ERR1 = ''
    I_ERR2 = ''
    I_ERR3 = ''
    I_DEL = ''
    I_RESET = ''
  IMPORTING
    E_RETURN = r1.
endif.
* endif.

```

A. Glossary

A

ABAP

ABAP is a proprietary programming language of the SAP AG.

B

BAPI

The Business Application Programming Interface allows external programs to access objects and business processes in SAP.

C

Change Master

The Engineering Change Master (ECM) contains the metadata to a change number.

Characteristic

An characteristic is an attribute of a SAP class.

D

Data Carrier

Please see [Vault](#).

DIR

DIR is the abbreviation for a SAP Document Info Record.

Document Key

A Document Info Record is identified by the combination of Document Type, Document Number, Document Part and Document Version.

Document Structure

A Document Structure is like a Bill Of Materials for Documents.

F

File Stream

Method of transfer to send an original to SAP.

I

Inspection Plan

Glossary description for Inspection Plan

iPPE

Integrated Product and Process Engineering is a SAP S/4HANA® module that can be used to manage products with many variants.

J

JCO

The Java Connector is an interface to SAP S/4HANA®. In the context of T4S4 it is now mostly replaced by the Netweaver RFC interface.

K

KPro

Kpro stands for Knowledge Provider. See also Data Carrier.

M

MM

MM is the abbreviation for a SAP Material Master.

N

NetWeaver RFC SDK

The NetWeaver RFC SDK contains libraries for 3rd party applications to connect to SAP S/4HANA®. It can be obtained from the SAP ONE Support Launchpad.

O

Object Link

A relation between SAP objects like Material Master and Document Info Record.

Object Management Record

Belongs to a SAP Change Number and Documents changes of one particular SAP object like a Material Master.

Original

A representation of a file in SAP.

OSS Note

The OSS Note is an online patch service for SAP. The patch can be identified by the OSS Notes number.

P

Patch Level

The version of SAP S/4HANA®. Please also see [How to Obtain the SAP and SAP GUI Release and Patch Level Information](#)
[Teamcenter Gateway for SAP S/4HANA - S/4HANA Preparation Guide](#).

PIR

PIR is an abbreviation for a SAP Purchase Info Record.

Portal Transaction

This means that a T4S4 transfer to SAP that is not triggered by a workflow handler but via the T4S4 Gateway Menu.

R

Revision Level

Used to show changes with reference to a change to a SAP Material Master or Document Info Record.

RFC

Remot Function Call (SAP).

S

SAP GUI

This is the application for SAP S/4HANA®.

SAP Logon

This is the application that a user needs to start the SAP GUI for a particular system. It may also refer to the process of logging in to SAP in Teamcenter via T4S4.

SAP Portal iView URL

Can be used to show sap content in a browser window.

T

T4S 4-Tier Client (SAP Lite)

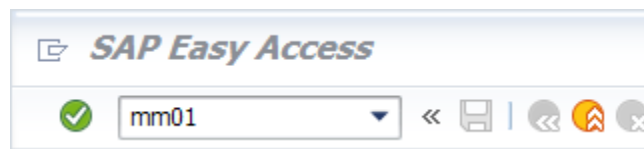
The T4S4 4-Tier Client or SAP Lite is a stripped down GS. It's only purpose is to open the SAP GUI on a Teamcenter 4-Tier Client.

T4S Gateway Menu

A Teamcenter menu item that is provided by T4S4 to enable Portal Transactions to SAP and provide connectivity options.

Transaction Code

A Transaction Code is a quick access code for a Transaction in the SAP GUI:



Transport Package

A file that contains functions that can be imported to SAP

U

User Exit (SAP)

A User Exit is a code for a program that is called if an object like an MaterialMaster has been changed or updated. In the context of T4S it is often used to initiate the process to trigger a transfer from SAP to Teamcenter.

V

Value Set

A Value Set is the SAP term for a list of selectable values for a characteristic.

Vault

The Vault is a server where a SAP DocumentInfoRecord original is stored. A synonym is also Data Carrier.

W

WBS

WBS is an abbreviation for a SAP Work Breakdown Structure.

Z

ZPTC

This is the short name for a Z-Table with the name /TESISPLM/ZPTC, used to trigger a transfer from SAP.

Siemens Industry Software

Headquarters

Granite Park One
5800 Granite Parkway
Suite 600
Plano, TX 75024
USA
+1 972 987 3000

Americas

Granite Park One
5800 Granite Parkway
Suite 600
Plano, TX 75024
USA
+1 314 264 8499

Europe

Stephenson House
Sir William Siemens Square
Frimley, Camberley
Surrey, GU16 8QD
+44 (0) 1276 413200

Asia-Pacific

Suites 4301-4302, 43/F
AIA Kowloon Tower, Landmark East
100 How Ming Street
Kwun Tong, Kowloon
Hong Kong
+852 2230 3308

About Siemens PLM Software

Siemens PLM Software, a business unit of the Siemens Industry Automation Division, is a leading global provider of product lifecycle management (PLM) software and services with 7 million licensed seats and 71,000 customers worldwide.

Headquartered in Plano, Texas, Siemens PLM Software works collaboratively with companies to deliver open solutions that help them turn more ideas into successful products. For more information on Siemens PLM Software products and services, visit www.siemens.com/plm.

© 2018 Siemens Product Lifecycle Management Software Inc. Siemens, the Siemens logo and SIMATIC IT are registered trademarks of Siemens AG. Camstar, D-Cubed, Femap, Fibersim, Geolus, I-deas, JT, NX, Omneo, Parasolid, Solid Edge, Syncrofit, Teamcenter and Tecnomatix are trademarks or registered trademarks of Siemens Product Lifecycle Management Software Inc. or its subsidiaries in the United States and in other countries. All other trademarks, registered trademarks or service marks belong to their respective holders.